

### GCERF in the Western Balkans

GCERF partners **build the capacity of governmental and non-governmental actors** in the prevention of violent extremism (PVE) and rehabilitation and reintegration (R&R); provide **direct assistance to returnees** from conflict zones covering medical, psycho-social, educational, administrative and livelihood support; contribute to **reducing the stigmatisation of returnees** and promote inter-religious and ethnic tolerance and social cohesion.

### Portfolio overview as of June 2022

#### Active grants

**Advocacy Training and Resource Centre (ATRC), Kosovo**  
2021–2022 | Principal Recipient with 3 sub-recipients

**Atlantic Initiative (AI), Bosnia and Herzegovina**  
2022–2024 | Direct grantee

**Counselling Line for Women and Girls, (CLWG), Albania**  
2021–24 | Principal Recipient with 3 sub-recipients

**Community Building Mitrovica (CBM), Kosovo**  
2021–22 | Direct grantee

**Community Development Fund (CDF), Kosovo**  
2021–22 | Principal Recipient with 1 sub-recipient

**Institute for Democracy and Mediation (IDM), Albania**  
2021–23 | Principal Recipient with 2 sub-recipients

**Macedonian Centre for International Cooperation (MCIC), North Macedonia**  
2021–24 | Principal Recipient with 3 sub-recipients






**Macedonian Young Lawyers Association (MYLA), North Macedonia**  
2021–24 | Principal Recipient with 3 sub-recipients

**Terre des Hommes Albania**  
2020–22 | Principal Recipient with 1 sub-recipient

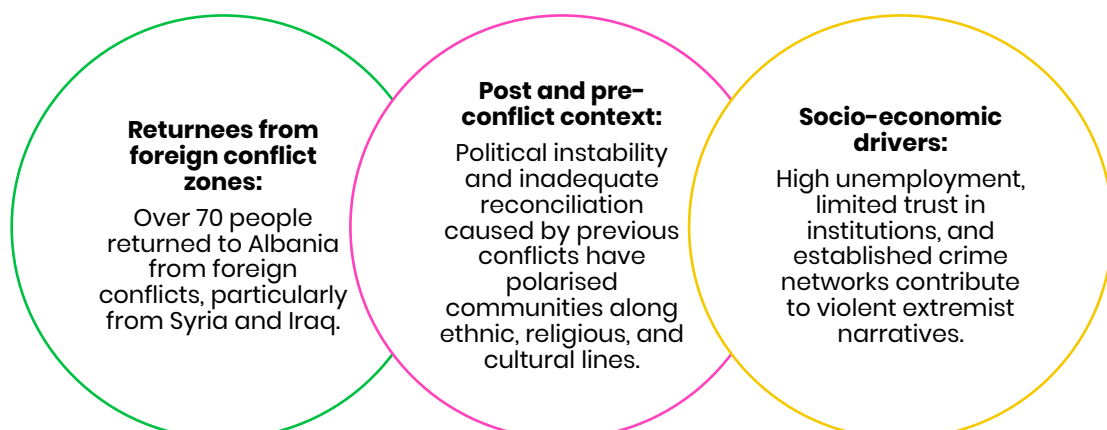


Investment started: 2017  
 Investment to date: USD 7.8 m  
 Current investment: USD 5.8 m  
 Active grants: 9

### Investment Focus

-  Community-based rehabilitation and reintegration of returnees
-  Albania, Bosnia and Herzegovina (BiH), Kosovo, North Macedonia
-  Returnees from conflict zones; men, women, children in receiving communities; frontline workers and other R&R actors, religious leaders.
-  2020–2024
-  In coordination with the Coordination Center for Countering Violent Extremism in Albania; The Ministry of Security in Bosnia and Herzegovina; the Ministry of Internal Affairs' Prevention and Reintegration Division in Kosovo; the National Committee for Countering Violent Extremism and Countering Terrorism in North Macedonia.

### Violent Extremism in Western Balkans: Drivers



## Current Programming: Systems Approach

**National:** Capacity building of central level government R&R and PVE institutions and actors through technical support and trainings. Facilitation of coordination.

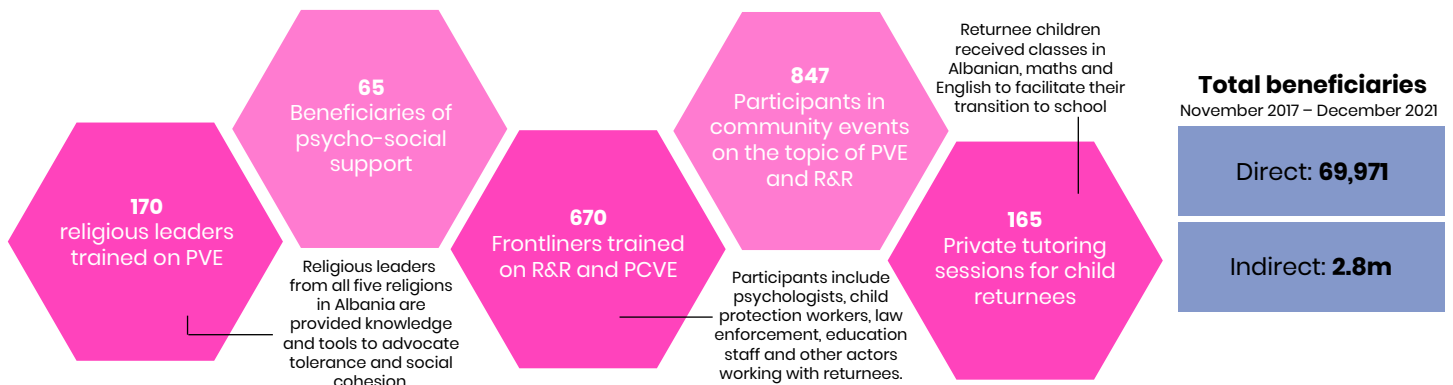
**Municipality:** Capacity building of local level government R&R and PVE actors through development of guidelines, provision of trainings, and facilitating coordination.

**Community:** Reducing the stigmatisation of returnees; increasing inter-religious and inter-ethnic tolerance; building capacities of communities on PVE and early identification.

**Individual:** Providing direct support to returnees and vulnerable people including medical, psycho-social, educational, administrative and livelihood support.

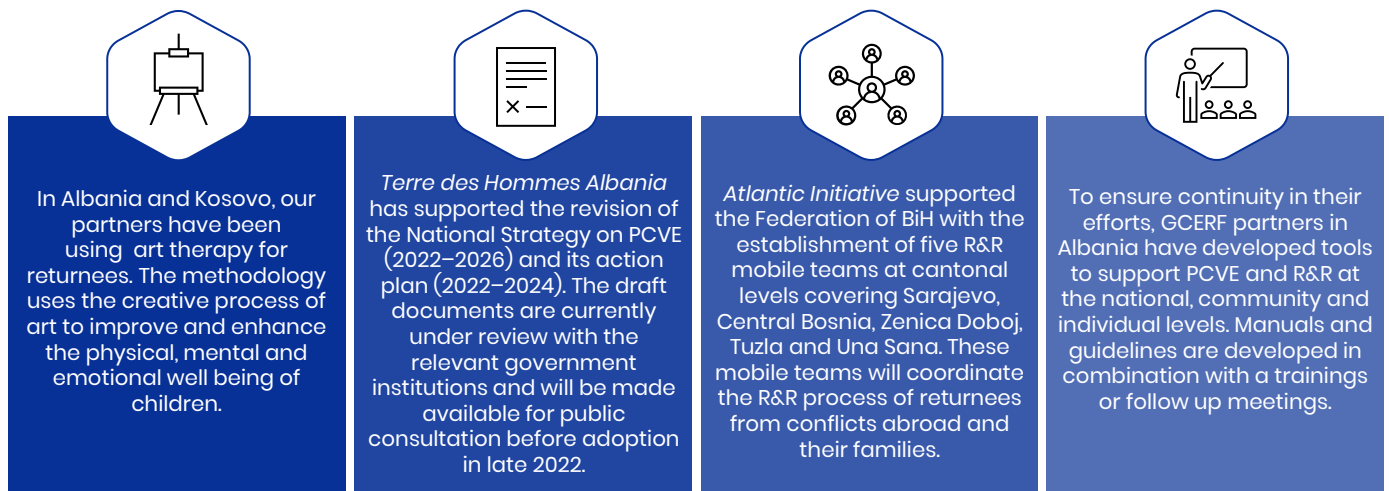
## Key Outputs

\* December 2020 – March 2022



## Key achievements\*

\* October 2021 – March 2022



CLWG provides training to women on PVE and R&R to women in seven districts in Albania. Most participants were more welcoming to returnees after being provided more knowledge on VE and the R&R process. CLWG aims to improve their knowledge and empower them to become agents of change in the community in order to foster an enabling environment for returnees.

“ Once they understood [the concepts of] foreign terrorist fighters and rehabilitation and reintegration, they were more accepting of the idea of having these individuals return to their community ”

– Counselling Line for Women and Girls Staff member

### Story of Change

Zara\*, a 31-year-old mother of five seems happy to meet. She says she used to be shy and uncomfortable around new people, but now that has changed. For the past year, Zara has been part of GCERF-funded activities in Kosovo organised by the Community Development Fund (CDF) Consortium and with coordination and support from the Ministry of Internal Affairs. CDF Consortium activities focus on community-based rehabilitation, reintegration, and re-socialisation (RRR) of returnees from conflicts abroad and their families.

The first activity Zara participated in was vocational training offered by CDF. Together with 18 other women, both returnees and women from vulnerable communities, Zara participated in sewing courses in Pristina. "I have grown professionally, and my communication has improved," Zara says. "We discuss a lot, but we also laugh a lot." Through a small-scale grant, she received a sewing machine and iron to complete a sewing course. In the coming year, CDF aims to provide Zara with market linkages to allow her to take the next steps in becoming a sewing professional.

A doting mother, she shares how her children are experiencing the RRR process. Despite the challenges, reintegration, and the re-socialisation of Zara and her children in the community seems promising. "Children play happily with other children and the neighbours seem to be extra caring with them. They imagine all the bad things we have been through," she says, with a determined smile. Zara appears confident about the future. Through GCERF-supported activities implemented by CDF, Zara has been able to acquire new skills and prioritise her children's education and future. She has a newfound interest in travelling around Kosovo and understands the small country that welcomed her back better.



\*name changed



“

Through the civic education school, CBM encourages youth to become active participants in their communities not just through weekly classes but also through community activities.

*"I am trying to contribute to our community with all the skills that I have gained through this programme... We learned how to address our needs and issues, how to resolve issues and how to stand up for ourselves and our rights"*

– Genta Morina, 18, participant of the civic education school in Mitrovica (CBM)

”

### GCERF's Added Value



GCERF focuses on **building institutional capacity** e.g. CSOs, government agencies, and community engagement forums



GCERF invests in building a PVE-focused **community of practice** with CSOs, government agencies, and experts



Communities are at the **forefront of project design and implementation**, and the programme works with existing community structures for sustainability



All project design and implementation are done in coordination with **nationally-aligned**, locally-led programmes



GCERF connects CSOs, communities, and other stakeholders with government and security actors, leading to **better coordination** and relationships



GCERF's consortium model and capacity-building approach enables us to work in **remote areas**