

GCERF in North Macedonia

GCERF partners build the capacity of governmental and non-governmental actors in the prevention of violent extremism (PVE) and rehabilitation and reintegration (R&R); provide direct assistance to returnees from conflict zones covering medical, psycho-social, educational, administrative and livelihood support; contribute to reducing the stigmatisation of returnees and promote inter-religious and ethnic tolerance and social cohesion

Portfolio overview as of January 2023

Active grants

Macedonian Centre for International Cooperation (MCIC)

2021-24 | Principal Recipient with 4 sub-recipients

- R&R support to returnees

- Build capacity and coordination among governmental and non-governmental R&R stakeholders
- Raise awareness on PCVE and R&R and reduce stigmatization of returnees

Macedonian Young Lawyers Association (MYLA)

2021-24 | Principal Recipient with 3 sub-recipients

- Build capacities of local institutions on R&R

- Build resilience of children, youth and parents on PCVE
- Reduce stigmatisation and increase acceptance of returnees

Current Programming: Systems Approach

National: improve coordination among governmental and non-governmental PCVE and R&R stakeholders

Municipality: Building PVE and R&R capacity of Local Multidisciplinary Teams (LMTs) mandated with R&R of returnees; improve capacity and coordination of frontline practitioners

Community: Building inter-ethnic tolerance among youth; fostering reduced stigmatisation of returnees; improving local media coverage on PCVE and R&R.

Individual: Provide tailored R&R support to returnees; provide livelihood support to returnees and vulnerable groups; building capacity of parents on pedagogical skills;



Current investment

- North Macedonia
- Skopje
- Polog
- Southwestern
- Northeastern

Investment started: 2021
Investment to date: USD 1.3 million
Current investment: USD 1.3 million
Active grants: 2

Investment Focus



Community-based rehabilitation and reintegration of returnees



Skopje, Polog, Southwestern Northeastern districts



Returnees from conflict zones; men, women, children and youth in receiving communities; frontline workers and other R&R actors, religious leaders, media actors.



2021-2024



GCERF in North Macedonia works with the National Committee for Countering Violent Extremism and Countering Terrorism (NCCVECT).

Violent Extremism in the North Macedonia: Drivers

Returnees from foreign conflict zones:

Almost 100 people returned to North Macedonia from foreign conflicts, particularly from Syria and Iraq.

Post and pre-conflict context:

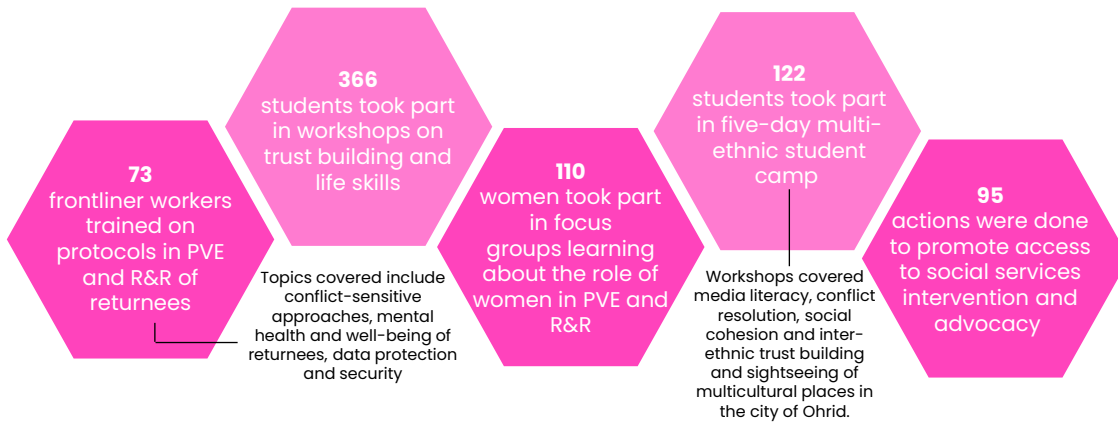
Political instability and inadequate reconciliation caused by previous conflicts have polarised communities along ethnic, religious, and cultural lines.

Socio-economic drivers:

High unemployment, limited trust in institutions, and established crime networks contribute to violent extremist narratives.


Key Outputs*

* October 2021 – December 2022




Key achievements*


* October 2021 – December 2022



In order to allow RFTFs freely express themselves and address their concerns, MCIC partners Pleiades and Horizon Civitas started supporting each of the RFTFs in receiving individual and family psycho-social counselling interventions.



MYLA partner Search for Common Ground promotes healthy lifestyle and habits among youth and raises awareness for diversity and prevention of bullying. 72 participants took part in youth debates. The activity aims to promote participation in sports and other extracurricular activities which improves inter-ethnic communication and tolerance.



Representatives of MCIC and NEXUS participated in workshops for the preparation of new National Strategies for CVE and CT (2023–2026) by sharing experiences, good practices and possible activities to be taken into consideration for the future work on PCVE issue.



GCERF's Added Value



GCERF focuses on **building institutional capacity** e.g., CSOs, and government agencies



GCERF invests in building a PVE-focused **community of practice** with CSOs, government agencies, and experts



Communities are at the **forefront of project design and implementation**, and the programme works with existing community structures for sustainability



All project design and implementation are done in coordination with **nationally-aligned**, locally-led programmes



GCERF connects CSOs, communities, and other stakeholders with government and security actors, leading to **better coordination** and relationships



GCERF's consortium model and capacity-building approach enables us to work in **remote areas**

Find out more about becoming an investor, our work, and the collective impact we make at: www.gcerf.org
contact.wb@gcerf.org

