

GCERF works with the Malian government to **implement its national action plan** by investing in local organisations that **design and run programmes that contribute to prevention-related outputs** of the plans.

GCERF-funded activities **engage local stakeholders** to support and **strengthen the capacity of communities** to mobilise, organise and effectively engage with their members and local authorities on topics such as inter-community conflicts, socio-economic reinsertion of ex-combatants and prisoners, and human trafficking and modern slavery.

Portfolio overview as of May 2022

Active grants

Environment et Développement du Tiers Monde Mali (ENDA-Mali)

2016-22 | Principal Recipient with 2 sub-recipients

- ❖ Enrolling children in formal education; training for youth, teachers and religious leaders on PVE.

Association Malienne pour La Survie au Sahel (AMSS)

2017-22 | Principal Recipient with 4 sub-recipients

- ❖ Creation of social cohesion mechanisms training youth on PVE, and training leaders on identifying at-risk youth.

Action Mopti

2020-22 | Principal Recipient with 4 sub-recipients

- ❖ Training youth ambassadors and local leaders on PVE community dialogues and economic empowerment.

Think Peace (2 grants)

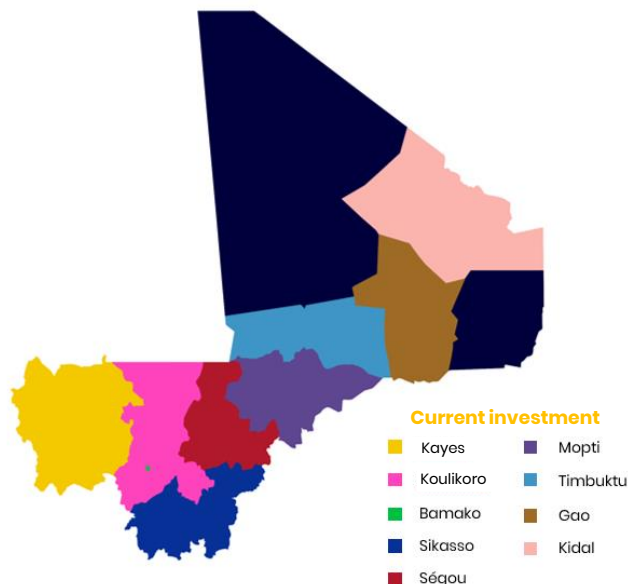
2020-22/24 | Principal Recipient with 3/2 sub-recipients

- ❖ Conflict resolution structures, reintegration of detainees and ex-combatants, local PVE action plans; emergency programme
- ❖ Reintegration of ex-detainees and ex-combatants; creating community action plans for PVE; improving political participation and economic opportunities for youth and women and improving access to basic services for communities.

Initiatives Conseil Développement Mali (ICD-Mali)

2022-24 | Principal Recipient with 2 sub-recipients

- ❖ Improving pastoral resilience through infrastructure investment, local management mechanisms for natural resources and conflicts, and establishment of a credit and savings collective.



Investment started: 2016
Investment to date: USD 9.5 million
Current investment: USD 5.5 million
Active grants: 6

Investment focus



Strengthening community mobilisation and engagement with local authorities on inter-community conflicts, socio-economic reinsertion of ex-combatants and prisoners, human trafficking and modern slavery.



Kayes, Mopti, Koulikoro, Timbuktu, Bamako, Gao, Sikasso, Kidal, Segou



Women, youth, religious and traditional leaders, farmers and herders, students, and local authorities.



2016-2024



GCERF in Mali works with the government, through the country support mechanism, and bilateral and multilateral donors to ensure a coordinated approach to prevention.

Violent Extremism in Mali: Drivers

Youth unemployment:
17.4% of youth aged 15-24 are unemployed, making them vulnerable to material incentives from VE groups (ILOSTAT data for 2020)

Human trafficking and modern slavery are on the rise in Mali. Victims of these human rights abuses are more vulnerable to radicalisation (Sourced from grantee reports)

Governance-related grievances:
VE groups thrive on the weakened state power, acting as a replacement for legitimate authorities by offering protection and essential services (sourced from donor report)

7th

On the Global Terrorism Index 2022, with 333 attacks and 574 deaths in 2021

Current Programming in Sahel: Systems Approach

GCERF delineates the Sahel within the context of the Group of Five Countries for the Sahel, also known as G5 Sahel, the intergovernmental body to promote regional cooperation in development and security matters. Our focus is on the central Sahel region covering Burkina Faso, Mali, and Niger. Our engagement in the region will directly bolster the implementation of National Action Plans of the three countries working in partnership with local, national, regional, and global partners.

GCERF's strategy for engagement in the Sahel region is built around two strategic objectives:

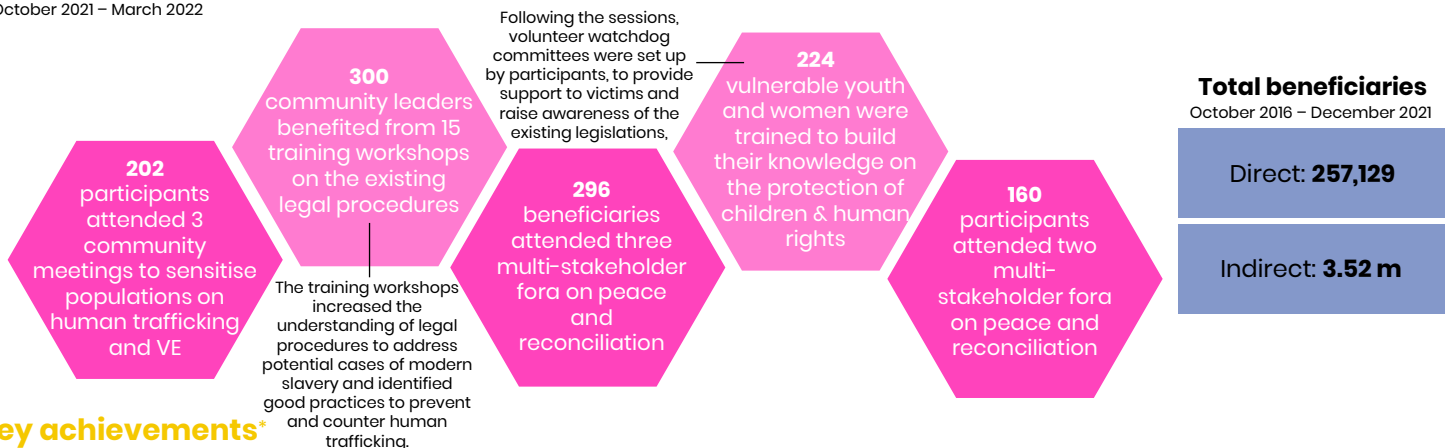
To contribute to improvements in the social ecology to create conditions conducive to prevention and resilience-building.

To facilitate community-led rehabilitation, disengagement, and (re)integration, including people disengaging from criminal, non-state armed, and violent extremist groups.

GCERF will mobilise and invest up to USD 10 million – in the Sahel region – to meet these objectives in a minimum period of three years. GCERF will prioritise resilience and prevention programming, including cross-border projects, that meet these objectives – all within the scope of regional and national NAPs and equivalents in order to achieve its overarching objective of supporting stability and resilience.

Key Outputs*

* October 2021 – March 2022



Key achievements*

* October 2021 – March 2022







Within the framework of the Emergency Programme, *Think Peace* recorded 15 radio episodes to present the Peaceful Cohabitation Charter that was adopted in August 2021. The episodes were recorded in five languages and broadcast by three local radio stations.

MSS identified and supported income-generating activities (IGAs) following general assembly consultations in the districts of project implementation. Activities include catering, farming, sewing and dyeing services. The 500 beneficiaries were selected by the communities themselves. The funds were disbursed through partner associations and organisations to ensure clarity and transparency throughout the process.

GCERF and the Malian government, in collaboration with the African Union Youth for Peace (Y4P), organised a forum on Peace and Prevention of Violent Extremism. The forum resulted in the draft of a joint declaration signed by 164 participants including recommendations on peace and preventing violent extremism, which will be shared with government authorities, including the Transitional President.

Think Peace conducted an emergency programme on human trafficking and human rights with a gender-based approach in the south of Mali:

“ The training allowed us to acquire an understanding of our fundamental rights while giving us the means to avail ourselves of them. As a female citizen, I plan to sensitise our families and neighbours on the incrimination and sanctions against forced labour of women and children. ”

- Participant in a gender-sensitive training session on modern slavery and human trafficking in the Kayes region

Story of Change

Sory A., age 23, lost his father in 2002. He had just finished an end-of-training internship in carpentry and was desperately searching for support with settling in his commune when he was identified to participate in a GCERF-funded programme, implemented by Action Mopti. Sory is one of PERCP’s focal points in the rural commune of Borondougou. An engaged young volunteer ambassador, Sory raises his community’s awareness about the importance of living together. Together with the commune’s other focal points, he initiates activities that reinforce social cohesion and support the prevention of violent extremism.

On 10 February 2022, when Malian troops appeared in his commune for a mopping-up operation and requested the community’s assistance in reclaiming the charitable payments, known as Zakats, that had been taken by violent extremist groups, the young people complied. In the evening, once the troops had left, an armed group returned to the village and began taking the people who had helped reclaim the Zakats. While many villagers managed to escape, Sory was abducted along with seven other people and released 10 days later.

He explains how he felt during this dreadful experience: *“Strangely, I felt sorry for the people who abducted us, and I saw them as victims. They behaved exactly as I had been taught during different training sessions on radicalisation and PVE conducted by Action Mopti. I was less afraid than the others. Moreover, I hadn’t actually participated in reclaiming the Zakats, as I was working in my PERCP-financed workshop, and I was the first one released after the investigations carried out by the violent extremist group. My workshop was financed right at the end of my internship in April 2021 and almost a year later, thanks to this workshop, I escaped many problems that I could have faced with the armed group.”*



“

ENDA collaborates with Quranic schools by providing 12-month vocational traineeships as well as training kits and equipment to Talibés mentor workstations:

“We were the ones who were unemployed, who had no source of income and therefore were easily preyed upon by the armed groups. Today, thanks to the intervention of Enda Mali, supported by the GCERF, the situation has fully changed, and we have access to economic opportunities.”

- Member of the supervisory committee for the vocational training of Talibés

”

GCERF’s Added Value

	<p>GCERF focuses on building institutional capacity e.g., CSOs, and government agencies.</p>		<p>GCERF invests in building a PVE-focused community of practice with CSOs, government agencies, and experts</p>		<p>Communities are at the forefront of project design and implementation, and the programme works with existing community structures for sustainability</p>
	<p>All project design and implementation are done in coordination with NCTC, leading to nationally-aligned, locally-led programmes</p>		<p>GCERF connects CSOs, communities, and other stakeholders with government and security actors, leading to better coordination and relationships</p>		<p>GCERF’s consortium model and capacity-building approach enables us to work in remote areas</p>

Find out more about becoming an investor, our work, and the collective impact we make at: www.gcerf.org
contact.sahel@gcerf.org



@gcerf



GCERF



@thegcerf



GCERF Outreach