

### GCERF in Kosovo

GCERF partners **build the capacity of governmental and non-governmental actors** of Prevention of Violent Extremism (PVE) and Rehabilitation and Reintegration (R&R); **provide direct assistance to returnees** from conflict zones covering psycho-social, educational, and livelihood support; contribute **to reducing stigmatization** of returnees and promote inter-ethnic tolerance and social cohesion.

### Portfolio overview as of January 2023

#### Active grants

#### Advocacy Training and Resource Centre (ATRC)

2021-22 | Principal Recipient with 3 sub-recipients

- ❖ Build capacity of governmental and non-governmental actors in R&R and PVE
- ❖ Support the implementation and monitoring of the national strategy for PCVE and CT
  - ❖ Coordination of PVE and R&R relevant stakeholders
  - ❖ Awareness Raising on R&R processes
  - ❖ Improvement of media coverage on PVE and R&R

2023-24 | Principal Recipient with 1 sub-recipient

- ❖ Build capacity of local P/CVE and R&R stakeholders including government institutions and actors, CSOs, youth.
- ❖ Support the R&R of returnees and their families.

#### Community Development Fund (CDF)

2021-2023 | Principal Recipient with 1 sub-recipients

- ❖ Trauma-informed educational and recreational support for children
  - ❖ Capacity building of frontline workers and partners
  - ❖ Livelihood support for returnees and vulnerable people



Investment started: 2017  
 Investment to date: USD 4 million  
 Current investment: USD 2,4 million  
 Active grants: 3

### Investment Focus



Community-based rehabilitation and reintegration of returnees



Ferizaj, Gjakova, Gjilan, Mitrovica, Peja, Pristina, Prizren



Returnees from conflict zones; women, men, and children in receiving communities; frontline workers, local authorities and other R&R actors, CSOs, youth.



2017-2024



Ministry of Internal Affairs' Prevention and Reintegration Division (DPR)



### Violent Extremism in Kosovo: Drivers

#### Returnees from foreign conflict zones:

Over 250 people returned to Kosovo from foreign conflicts, particularly from Syria and Iraq.

#### Post and pre-conflict context:

Political instability and inadequate reconciliation caused by previous conflicts have polarised communities along ethnic, religious, and cultural lines.

#### Socio-economic drivers:

High unemployment, limited trust in institutions, and established crime networks contribute to violent extremist narratives.

## Current Programming: Systems Approach

**National:** Monitoring of the National PVE and CT strategy and improve accountability and financial sustainability of PCVE and R&R work; Build capacity and support coordination of PCVE and R&R actors;

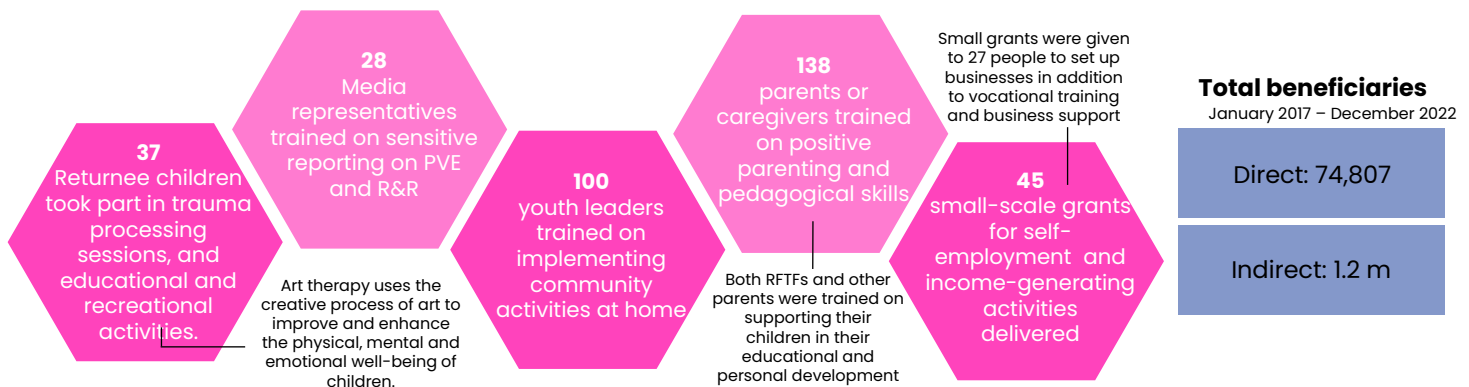
**Municipality:** Build capacity of local governmental R&R actors; advocate for the local role in PVE and R&R; improve accountability and financial sustainability of their PCVE and R&R work.

**Community:** Reduce stigmatisation towards returnees; Increase inter-ethnic tolerance; Build capacity of community based CSOs in PVE and R&R; improve capacity and civic engagement of youth.

**Individual:** provide direct support to returnees and vulnerable people including psycho-social, educational and livelihood support.

## Key Outputs

\* January 2021 – December 2022



## Key achievements\*

\* October 2021 – March 2022



ATRC partner Peer Educators Network organises workshops with representatives of Local Youth Action Councils, Assembly of Kosovo youth and other youth groups of high school and university students with an interest in youth activism. The workshops built their knowledge and capacity on organizing awareness campaigns within their communities.

*"I have learned more about citizenship, volunteer work and its benefits. I have also learned about my role in society and how we can identify social problems and what initiatives we should take to address them."*

-S.P., 18 years old, Pristina region Youth workshops organized by PEN, March 2022

## Story of Change

Zara\*, a 31-year-old mother of five seems happy to meet. She says she used to be shy and uncomfortable around new people, but now that has changed. For the past year, Zara has been part of GCERF-funded activities in Kosovo organised by the Community Development Fund (CDF) Consortium and with coordination and support from the Ministry of Internal Affairs. CDF Consortium activities focus on community-based rehabilitation, reintegration, and re-socialisation (RRR) of returnees from conflicts abroad and their families.

The first activity Zara participated in was vocational training offered by CDF. Together with 18 other women, both returnees and women from vulnerable communities, Zara participated in sewing courses in Pristina. "I have grown professionally, and my communication has improved," Zara says. "We discuss a lot, but we also laugh a lot." Through a small-scale grant, she received a sewing machine and iron to complete a sewing course. In the coming year, CDF aims to provide Zara with market linkages to allow her to take the next steps in becoming a sewing professional.

A doting mother, she shares how her children are experiencing the RRR process. Despite the challenges, reintegration, the re-socialisation of Zara and her children in the community seems promising. "Children play happily with other children and the neighbours seem to be extra caring with them. They imagine all the bad things we have been through," she says, with a determined smile. Zara appears confident about the future. Through GCERF-supported activities implemented by CDF, Zara has been able to acquire new skills and prioritise her children's education and future. She has a newfound interest in traveling around Kosovo and understand the small country that welcomed her back better.



\*name changed



Through the civic education school, CBM encourages youth to become active participants in their communities not just through weekly classes but also through community activities.

*"I am trying to contribute to our community with all the skills that I have gained through this programme. [...] we learned how to address our needs and issues, how to resolve issues and how to stand up for ourselves and our rights"*

– Genta Morina, 18, participant of the civic education school in Mitrovica (CBM)

## GCERF's Added Value



GCERF focuses on **building institutional capacity** e.g. CSOs, government agencies,



GCERF invests in building a PVE-focused **community of practice** with CSOs, government agencies, and experts



Communities are at the **forefront of project design and implementation**, and the programme works with existing community structures for sustainability



All project design and implementation are done in coordination with **nationally-aligned**, locally-led programmes



GCERF connects CSOs, communities, and other stakeholders with government and security actors, leading to **better coordination** and relationships



GCERF's consortium model and capacity-building approach enables us to work in **across the country**