

GCERF works with the government of Burkina Faso and the G5 Sahel to **implement joint strategies** by investing in local organisations that design and run programmes that support stability and resilience.

GCERF-funded activities **engage local stakeholders** to support and **strengthen the capacity of communities** to mobilise, organise and effectively engage with their members and local authorities on resilient pastoralism, sustainable economic opportunities, conflict prevention, child protection, and psychosocial support to victims of violent extremism (VE).

Investment Focus



Increase resilience of youth and women to the risks of violent radicalisation and extremism, strengthen local conflict resolution mechanisms.



Lorum, Passore, Yatenga, Zondoma provinces (Northern region), Ouadalan, Seno, Soum, Yagha provinces (Sahel region)



Pastoralists and farmers, Internally Displaced Persons, and host communities, traditional and religious leaders, unemployed men and women (aged 15–25), vulnerable children (aged 7–18).



2021 – 2025



We work with the government, through the Country Support Mechanism, and bilateral and multilateral donors to ensure a coordinated approach to prevention of violent extremism in Burkina Faso.

Current investment

- Burkina Faso
- Sahel Region
- Nord Region

Investment started: 2022
Investment to date: USD 3.75 million
Current investment: USD 3.75 million
Active grants: 4



Portfolio overview as of February 2024

Union Fraternelle des Croyants de Dori (UFC-Dori)

2022–24 | *Principal Recipient with 2 sub-recipients*

- ❖ Addressing farmer-herder conflicts through local conflict prevention and dialogue mechanisms strengthening, and awareness-raising of land regulations among communities. Improved resilience through the promotion of alternative discourses, the creation of socioeconomic opportunities, and psychosocial support to victims of VE groups.

Réseau Afrique Jeunesse (RAJ)

2022–24 | *Principal Recipient with 2 sub-recipients*

- ❖ Improving the management of natural resources to reduce local conflicts; strengthening local conflict resolution and dialogue mechanisms; IGPs to improve socio-economic opportunities for young pastoralists and IDPs. Monitoring cases of discrimination and early signs of radicalization.

Réseau de Communication sur le Pastoralisme (RECOPA)

2023–25 | *Principal Recipient with 1 sub-recipient*

- ❖ Support agropastoral communities in the Sahel and the North in the prevention of inter-community conflicts; improving social cohesion through spaces for dialogue and support youth and women in socioeconomic opportunities.

KEOOGO

2023–25 | *Principal Recipient with 2 sub-recipients*

- ❖ Engaging with judicial actors and local leaders to strength the protective ecosystem of at-risk children and victims of violence and increase their resilience to violent radicalization; supporting the socio-professional reintegration of girl and boy victims of violence; establishment of communication channels to facilitate children's complaints.

Violent Extremism in Burkina Faso: Drivers



1st
On the Global
Terrorism Index
2024

Current Programming: Systems Approach

GCERF delineates the Sahel within the context of the Group of Five Countries for the Sahel, also known as G5 Sahel, the intergovernmental body to promote regional cooperation in development and security matters. Our focus is on the central Sahel region covering Burkina Faso, Chad, Mali, Mauritania and Niger. Our engagement in the region will directly bolster the implementation of National Action Plans of the five countries working in partnership with local, national, regional, and global partners.

GCERF's strategy for engagement in the Sahel region is built around two strategic objectives:

To contribute to improvements in the social ecology to create conditions conducive to prevention and resilience building.

To facilitate community-led rehabilitation, disengagement, and (re)integration, including people disengaging from criminal, non-state armed, and violent extremist groups.

GCERF will mobilise and invest up to USD 10 million – in the Sahel region – to meet these objectives in a minimum period of three years. GCERF will prioritise resilience and prevention programming, including cross-border projects, that meet these objectives – all within the scope of regional and national NAPs and equivalents in order to achieve its overarching objective of supporting stability and resilience.

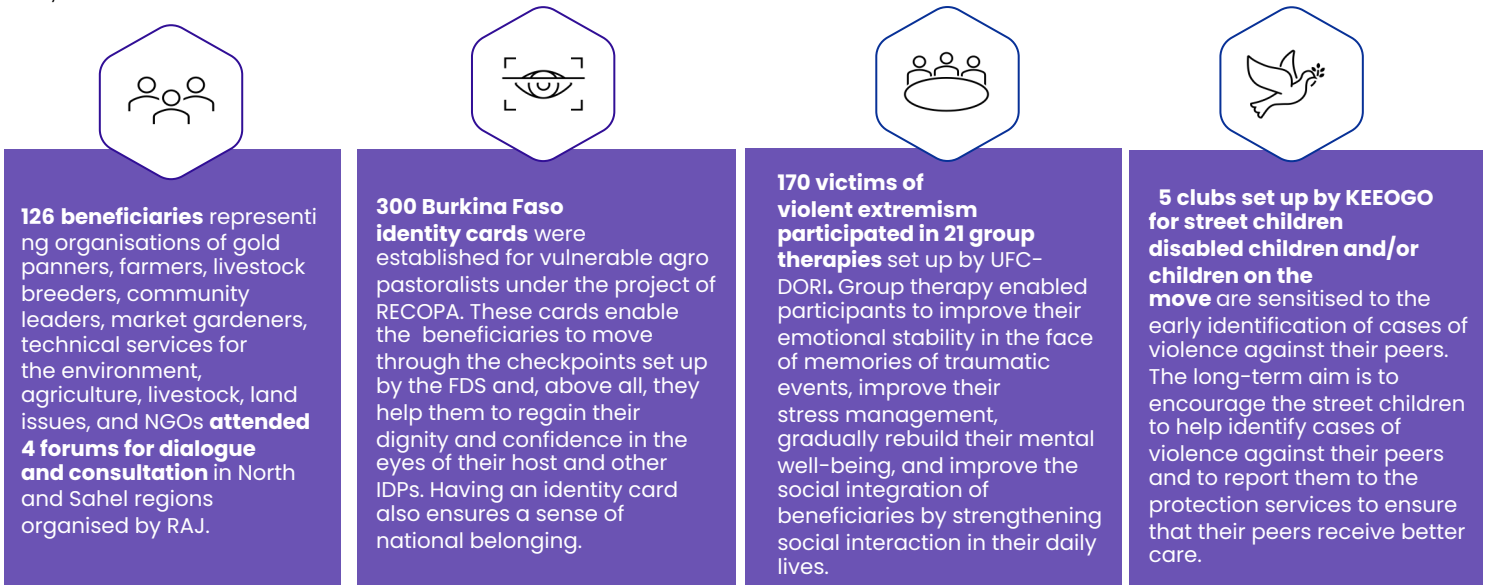
Key Outputs

January 2022 – December 2023



Key achievements

January 2022 – December 2023



"I attended a debate against cooperation between the Fulani and the Mossi when we returned to Oiundinguin. The people had said they no longer wanted a particular ethnic community in their village. We introduced the theme of commonality into the discussion. Through this discussion, the committee was able to make them understand that we must unite to move in the same direction."

A member of the Ouindigui Monitoring Committee, set up by RAJ

Story of Change

As part of KEOOGO's project activities, a 16-year-old child victim of terrorism from the rural commune of Thiou in the North region has benefited from school support and is registered to receive psychosocial and nutritional care.

"My name is O. S. B. H., from the commune of Thiou. I'm 16 years old and a child victim of terrorism, but I'm also a determined student. I had a traumatic experience when terrorists attacked my school a year ago. I saw my classmates and teachers injured in front of my eyes.

Despite this tragedy, I found the strength to continue going to school. For me, education is a means of resisting hatred and building a better future. However, it wasn't easy to go back to school. Nightmares haunted me, but I had the support of my teachers and classmates, certain associations, social action and above all the Community Child Protection Network (RCPE in French) in Thiou, which helped me to overcome my fears. After a blank year due to the closure of schools in the middle of the year, I am currently enrolled at the Lycée Yamwaya in Ouahigouya in 5th grade thanks to the educational support I received from your project.

Despite the difficulties I'm facing (accommodation, food, clothes, etc.), I'm determined to continue my studies and fulfil my dreams. I want to become a lawyer to defend the rights of child victims of terrorism and give them a voice. I want to help build a safer and more peaceful world.

I want my testimony to serve as a reminder that we need your support to rebuild our lives so that we can continue to learn and grow despite the trauma we have experienced. I would like to thank everyone who has contributed in any way to getting the school going again."



School supplies for pupils, Dori



Educational and self-protection sessions for street children, disabled children and children on the move, Djibo.



A woman participant in group therapy **on the psychosocial support provided by UFC-Dori :**

"Accepting my husband's execution for no apparent reason destroyed me. I was also worried about bringing up my children. Alone and without knowledge, I felt lost. When I arrived, I found it difficult to eat and couldn't close my eyes. Sadness was the order of the day. At the beginning of the support, I was at a loss for words and just cried. But since we've been following the project's activities, I can now eat, sleep and even talk. If you had to choose between what the project has provided and food, it would be wise to prioritise psychosocial support before looking for food, because you can have food without having an appetite."

GCERF's Added Value



GCERF focuses on **building institutional capacity** e.g., CSOs, and government agencies.



GCERF invests in building a PVE-focused **community of practice** with CSOs, government agencies, and experts



Communities are at the **forefront of project design and implementation**, and the programme works with existing community structures for sustainability



All project design and implementation are done in coordination with NCTC, leading to **nationally-aligned, locally-led programmes**



GCERF connects CSOs, communities, and other stakeholders with government and security actors, leading to **better coordination and relationships**



GCERF's consortium model and capacity-building approach enables us to work in **remote areas**