

GCERF in Bosnia and Herzegovina

GCERF-funded programmes aim to 1) **build the capacity** of national and local institutions and frontline practitioners working on Rehabilitation and Reintegration (R&R) and PVE; 2) **improve strategic communications** on R&R within institutions and to the public; 3) **increase social cohesion and community agency** to create an enabling environment for R&R of returnees.

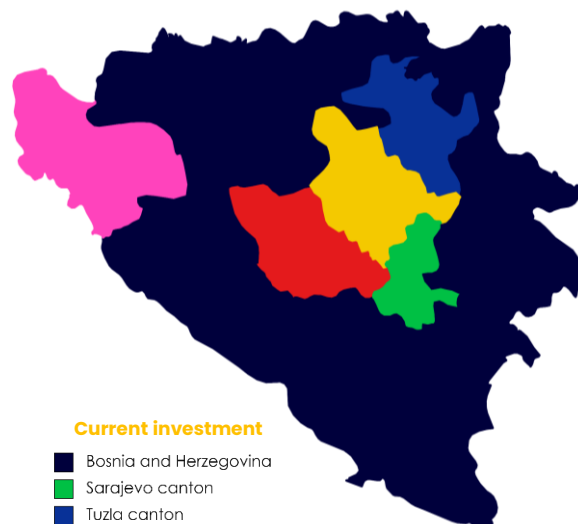
Portfolio overview as of August 2023

Active grants

Atlantic Initiative

2022-24 | Direct Grant

- ❖ Re-establishing and strengthening mobile teams mandated to implement R&R and PVE at the federal and cantonal level;
- ❖ Encouraging constructive media coverage on R&R and PVE
- ❖ Strengthening the capacities of civil society organisations (CSOs).



Current investment

- Bosnia and Herzegovina
- Sarajevo canton
- Tuzla canton
- Zenica-doboj canton
- Una-Sana canton
- Central Bosnia canton

Investment started: 2022
Investment to date: USD 0.5 million
Current investment: USD 0.5 million
Active grants: 1

Current Programming: Systems Approach

National: Re-establishing federal mobile teams mandated with R&R and building their capacity; revising the communications strategy on R&R and PVE.

Cantons: Establishing local mobile teams in cantons where returnees live

Community: Building the capacity of local CSOs to contribute to PVE and R&R; training journalists to report on security-sensitive topics.

Individual: individual support will be provided through additional grants.

Investment Focus



Community-based rehabilitation and reintegration of returnees



Cantons of Sarajevo, Tuzla, Zenica-Doboj, Una-Sana, and Central Bosnia.



R&R and PVE practitioners at the local, cantonal and federal level; local media actors, CSOs



2022-2024



GCERF in Bosnia and Herzegovina works with the Ministry of Security.

Violent Extremism in Bosnia and Herzegovina: Drivers

Returnees from foreign conflict zones:

Over 90 people returned to Bosnia and Herzegovina from foreign conflicts, particularly from Syria and Iraq.

Post and pre-conflict context:

Political instability and inadequate reconciliation caused by previous conflicts have polarised communities along ethnic, religious, and cultural lines.

Socio-economic drivers:

High unemployment, limited trust in institutions, and established crime networks contribute to violent extremist narratives.

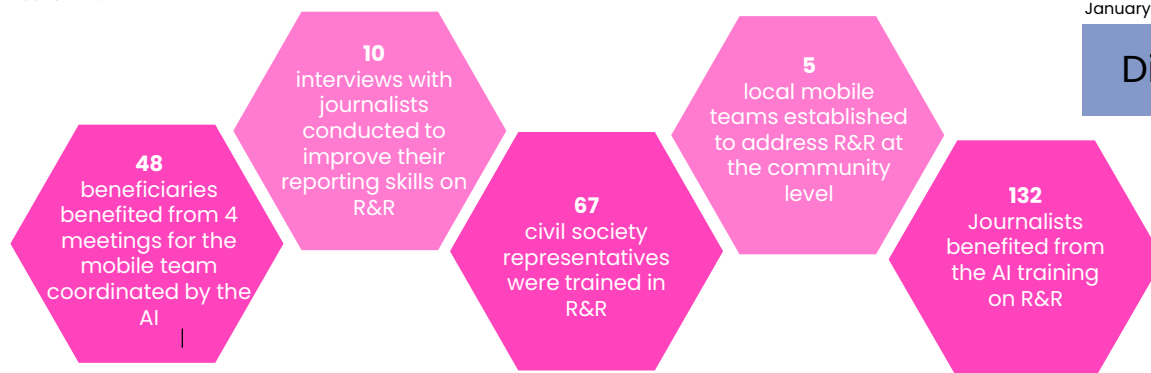
Key Outputs*

* January 2022 – June 2023

Total beneficiaries

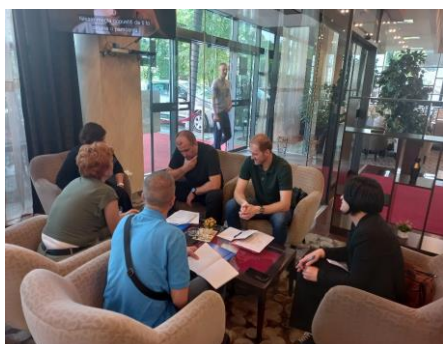
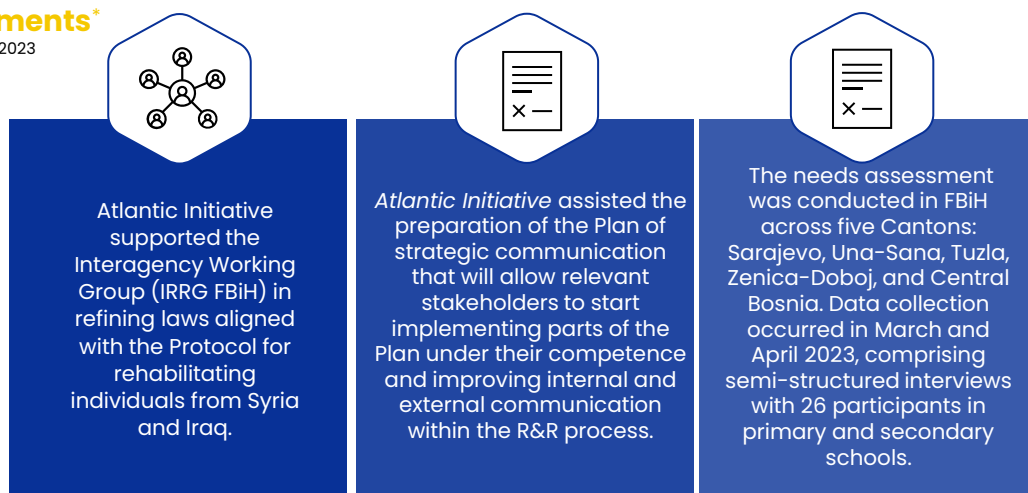
January 2022 – June 2023

Direct: 385



Key achievements*

* January 2022 – June 2023



GCERF's Added Value



GCERF focuses on **building institutional capacity** e.g., CSOs, and government agencies.



GCERF invests in building a PVE-focused **community of practice** with CSOs, government agencies, and experts



Communities are at the **forefront of project design and implementation**, and the programme works with existing community structures for sustainability



All project design and implementation are done in coordination with **nationally-aligned, locally-led** programmes



GCERF connects CSOs, communities, and other stakeholders with government and security actors, leading to **better coordination** and relationships



GCERF's consortium model and capacity-building approach enables us to work **across the country**

Find out more about becoming an investor, our work, and the collective impact we make at: www.gcerf.org
contact.wb@gcerf.org



GCERF
 Geneva, Switzerland