

### GCERF in Albania

GCERF partners **build the capacity of governmental and non-governmental actors** in the prevention of violent extremism (PVE) and rehabilitation and reintegration (R&R); provide **direct assistance to returnees** from conflict zones covering medical, psycho-social, educational, administrative and livelihood support; contribute to **reducing the stigmatisation of returnees** and promote inter-religious tolerance and social cohesion.

### Portfolio overview as of January 2023

#### Active grants

#### Counselling Line for Women and Girls (CLWG)

2021-2024 | Principal Recipient with 3 sub-recipients

- ❖ Building the capacity of religious leaders on PVE and social cohesion; operating a counselling line for violent extremism related issues; providing psycho-social, educational and livelihood support to returnees; building women's capacity on PVE.

#### Institute for Democracy and Mediation (IDM)

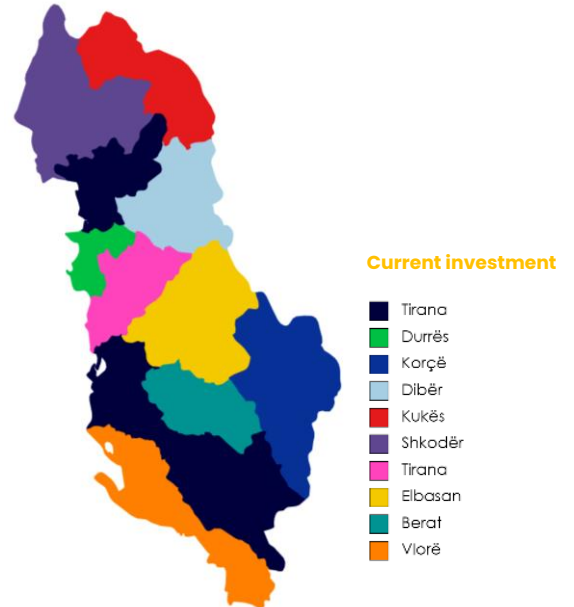
2021-23 | Principal Recipient with 2 sub-recipients

- ❖ Developing guidelines for and building capacities of central and local institutions on PVE and R&R; organising community events to reduce the stigma of returnees and improve social cohesion; providing livelihood support.

#### Terre des Hommes Albania






2020-23 | Principal Recipient with 1 sub-recipient

- ❖ Building the capacities of frontline practitioners in trauma-informed care; providing direct support to RFTFs and families; empowering and improving social cohesion among youth.

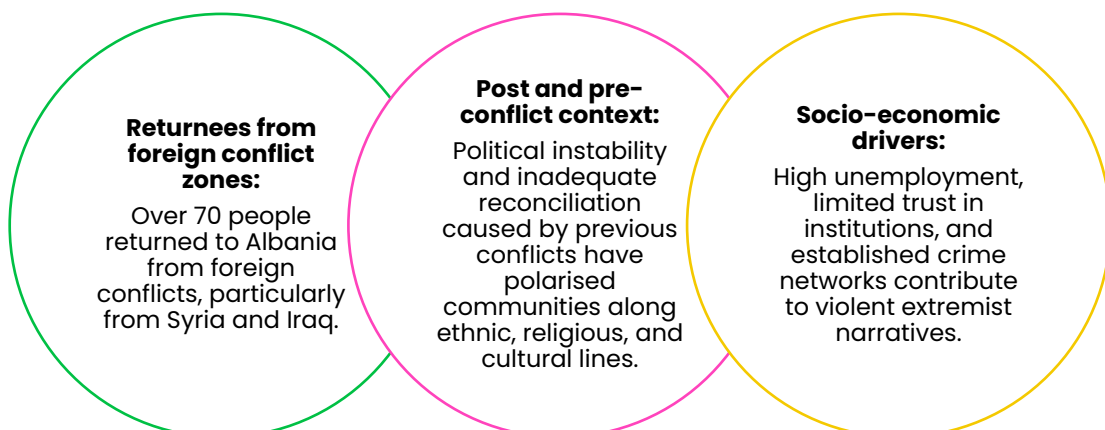


Investment started: 2020  
 Investment to date: USD 2 million  
 Current investment: USD 2 million  
 Active grants: 3

### Investment Focus

-  Community-based rehabilitation and reintegration of returnees
-  Tirana, Durrës, Korçë, Dibër, Kukës, Shkodër, Elbasan, Berat, Vlorë
-  Returnees from conflict zones; women, men, and children in receiving communities; frontline workers, local authorities, and other R&R actors, religious leaders.
-  2020-2024
-  In coordination with the Coordination Center for Countering Violent Extremism and local government actors.

### Violent Extremism in Albania: Drivers



### Current Programming: Systems Approach

**National:** Supporting the revision of the National Strategy and development of an Action Plan on R&R and PCVE; developing the Standard Operating Procedures on R&R; building the capacity of central level R&R actors.

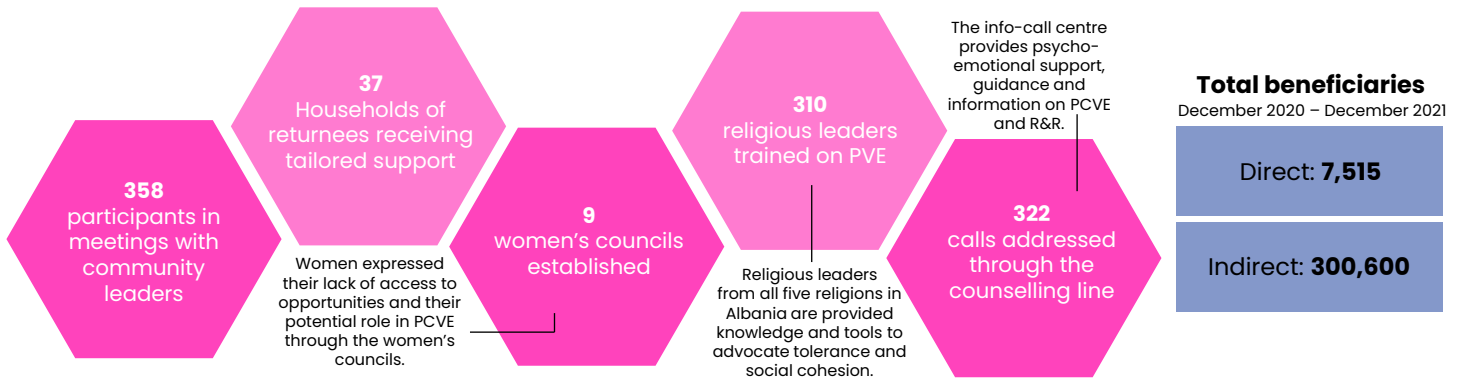
**Municipality:** Developing guidelines for local authorities for R&R and building capacity.

**Community:** Reducing the stigmatisation of returnees; increasing inter-religious tolerance; building capacity of women on R&R; providing access to a free counselling line for PVE and R&R related issues.

**Individual:** Providing direct support to returnees and vulnerable people including medical, psycho-social, educational, administrative and livelihood support.

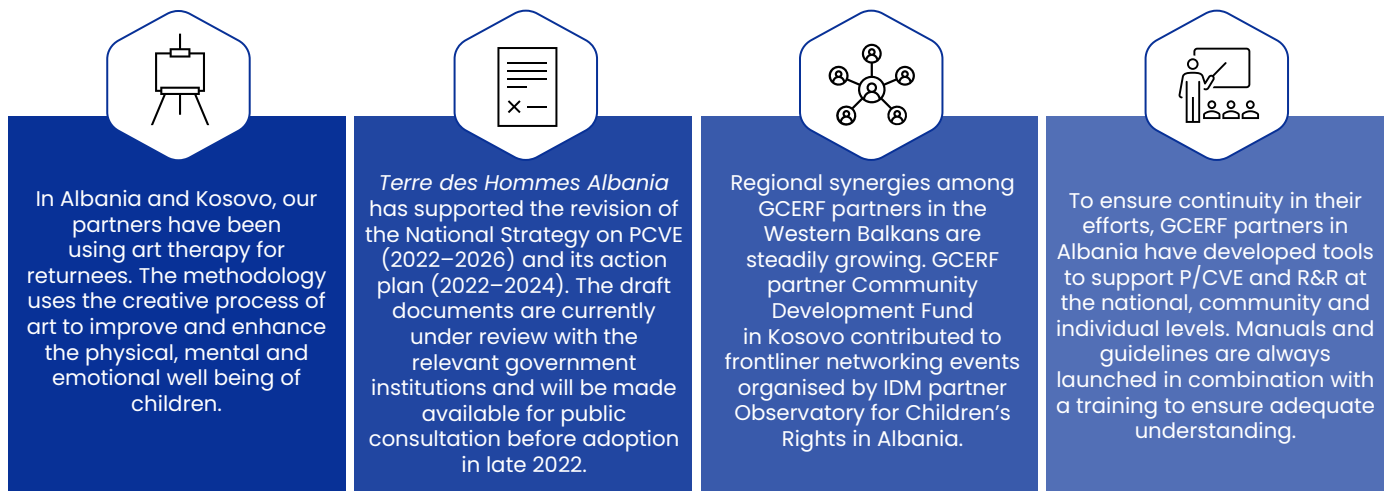
### Key Outputs\*

\* December 2020 – December 2022



### Key achievements\*

\* October 2021 – March 2022



CLWG provides training to women on PVE and R&R to women in seven districts in Albania. Most participants were more welcoming to returnees after being provided more knowledge on VE and the R&R process. CLWG aims to improve their knowledge and empower them to become agents of change in the community so as to foster an enabling environment for returnees.

“Once they understood [the concepts of] foreign terrorist fighters and rehabilitation and reintegration, they were more accepting of the idea of having these individuals return to their community

- Counselling Line for Women and Girls Staff member

## Story of Change

When Violeta\* first participated in one of the women’s council meetings in Yzberisht, she immediately stood out from the group, open-heartedly sharing her story and her motivation for participating. For her, and many women, the women’s councils provide a safe space for women from different backgrounds to discuss issues in the community. IDM partner Woman Center for Development and Culture Albania (WCDCA) is setting up 10 women’s councils across the country to empower women and increase their community engagement.

The women’s councils aim to improve the social cohesion and community agency of women, with the larger purpose of increasing community resilience and the level of acceptance for RFTFs and their families.

Violeta, a mother of two, was particularly drawn to the purpose of the programme because she empathised with the challenges of women and children who have undergone trauma. She realised that the challenges of returning women from Syria were not much different than what she had experienced herself when attempting to start a new life, leaving behind the trauma of her past. Being able to exchange ideas with like-minded women allowed Violeta to finally feel visible. Through the women’s council, she wants to support other women and encourage their community agency.



\*name changed



IDM developed a draft guideline for Local Public Safety Councils (LPSCs), a new concept in Albania that is currently being piloted in several municipalities with training support from Terre des Hommes Albania. The LPSCs, chaired by the local Mayor, is established to be the centre of local coordination and cooperation on preventing and countering local VE and other local crimes.

*The draft regulation enables actors to identify who is responsible and for what, which makes their work more practical and easier to implement*

– Anila Leka, representative Prosecutor’s office of Albania



## GCERF’s Added Value



GCERF focuses on **building institutional capacity** e.g., CSOs, and government agencies.



GCERF invests in building a **PVE-focused community of practice** with CSOs, government agencies, and experts



Communities are at the **forefront of project design and implementation**, and the programme works with existing community structures for sustainability



All project design and implementation are done in coordination with **nationally-aligned, locally-led** programmes



GCERF connects CSOs, communities, and other stakeholders with government and security actors, leading to **better coordination and relationships**



GCERF’s consortium model and capacity-building approach enables us to work in **remote areas**

Find out more about becoming an investor, our work, and the collective impact we make at: [www.gcerf.org](http://www.gcerf.org)  
[contact.wb@gcerf.org](mailto:contact.wb@gcerf.org)



**GCERF**  
Geneva, Switzerland